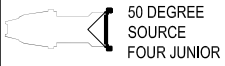
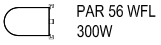


LIGHTING KEY



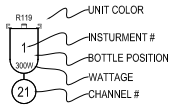
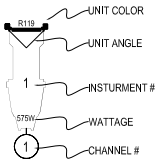
50 DEGREE SOURCE FOUR JUNIOR



PAR 56 WFL 300W



HOUSE LIGHT



TABLER INVENTORY

8 - SOURCE FOUR FIFTY DEG. JUNIOR WITH EDISON CONNECTOR

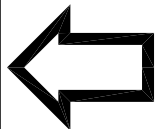
24 - PAR 56 WIDE FLOOR LENSE WHIT EDISON CONNECTOR

6 - HOUSE LIGHT HANGING LAMPS WITH EDISON CONNECTOR

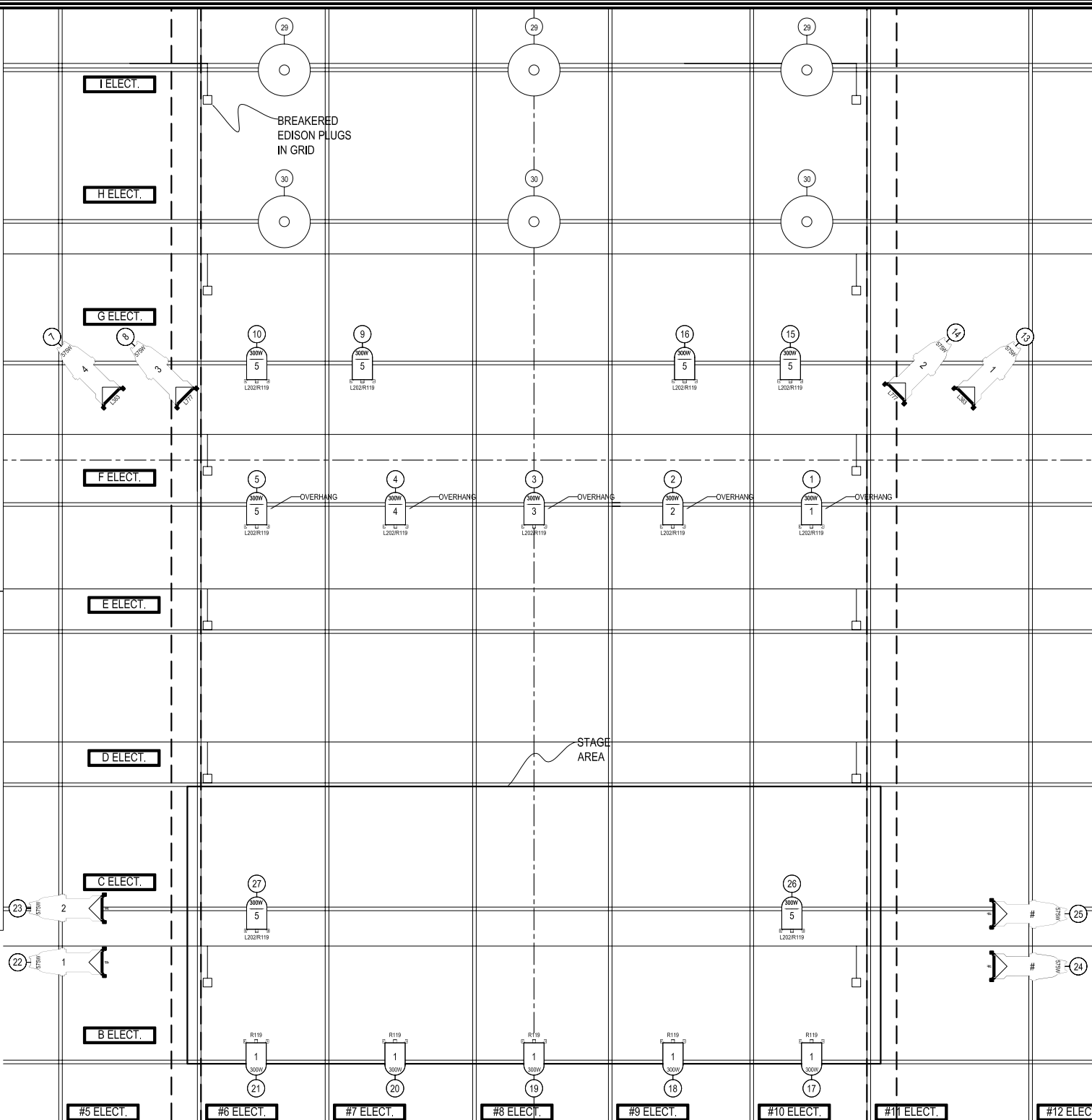
9 - NSI DMX 4 CHANNEL 2400W PORTABLE DIMMERS EDISON INPUTS

9 - DMX CABLES 25 FOOT

32 - HUSKY EDISON CABLE



NORTH



M. d. e. s. i. g.
 439 LORIMER ST. BROOKLYN, NY 11201
ME DESIGNS
 439 LORIMER ST. #A
 BROOKLYN, NY 11206
 MEDESIGNS@NYC.RR.COM
 (917)-548-9572

SHOW:
TABLER CETNER
PRESENT'S

SCALE: 1/4"=1'-0"
 DATE: 1-17-07
 DATE REVISED: 2-19-07

DISCLAIMER:
 The Company shall not hold the Designer responsible for any damage or delay resulting from the failure or inability of third party contractors, builders, painters, technicians, stagehands etc. to accomplish the realization of design drawings, sketches or plans prepared by Designer. Designer shall not be liable for damage or injuries to any personnel, including but not limited to performers or audience members resulting from any defect in the construction or setup of the design. Further, it is Company's responsibility to provide adequate insurance coverage and to require safety protections and training for the crew (including but not limited to construction, costume, painting shops and stage) and performers attached to the production. Any failure to cure safety hazards or provide protection shall rest with the Company. The Company shall indemnify, protect and hold Designer harmless in any action seeking to recover damages.

COPYRIGHT:
 This copyright statement is of all rights reserved. Design, sketches, models and illustrations prepared by Designer and shall remain the property of the Designer. No reproduction or use of the drawings or models or illustrations, in whole or in part, without the written consent of the Designer is authorized.

PLATE
L - 1
LIGHTING
PLAN