

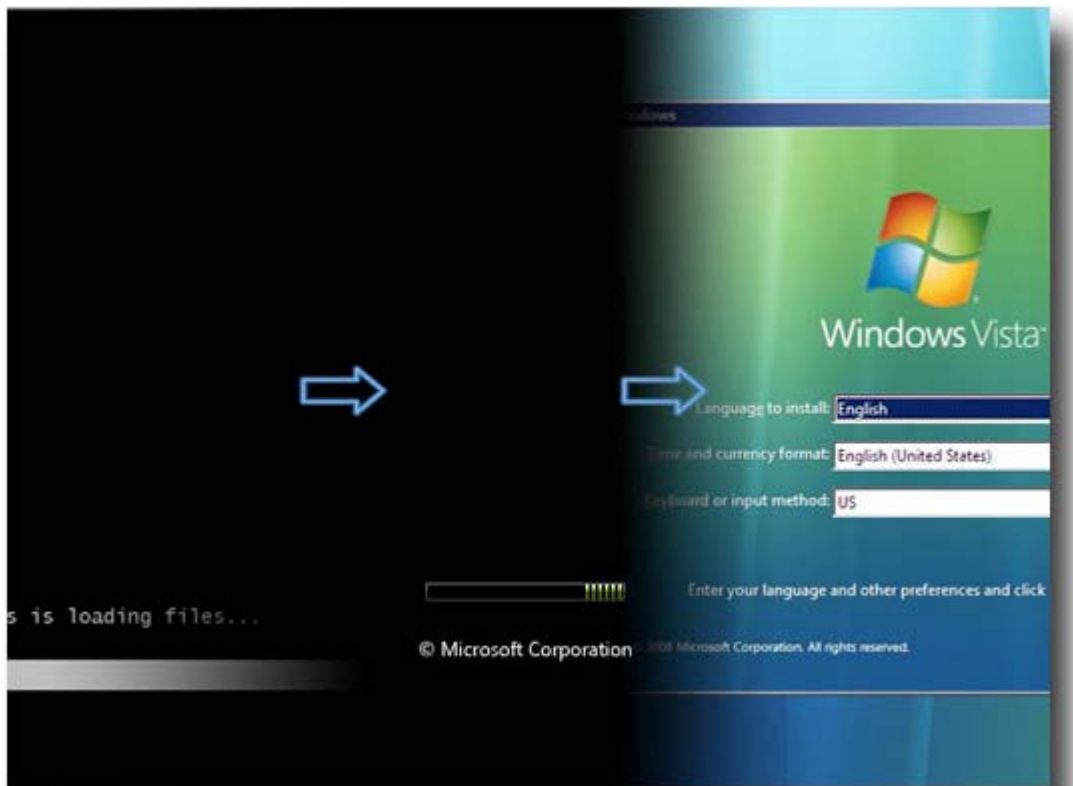
Microsoft Windows Vista Ultimate – Installation Screen Shots

Introduction

Microsoft Windows Vista is distributed as one DVD. The Product Key is located on the back of the DVD sleeves. Make sure to store the Product Key in a safe place, as you cannot complete the installation without it.

Instructions

Insert the Windows Vista Ultimate installation DVD into your computer's CD/DVD-ROM drive. Allow your computer to boot from the DVD. The boot loader will begin to load the necessary files to run the installation program. The setup program will begin to initialize, and soon you'll be presented with the *Install Windows* dialog.



In the first dialog, you'll be presented with several options to set language-related preferences. These preferences will be used to set language used in the installation dialogs. Click the "Next" button to continue.



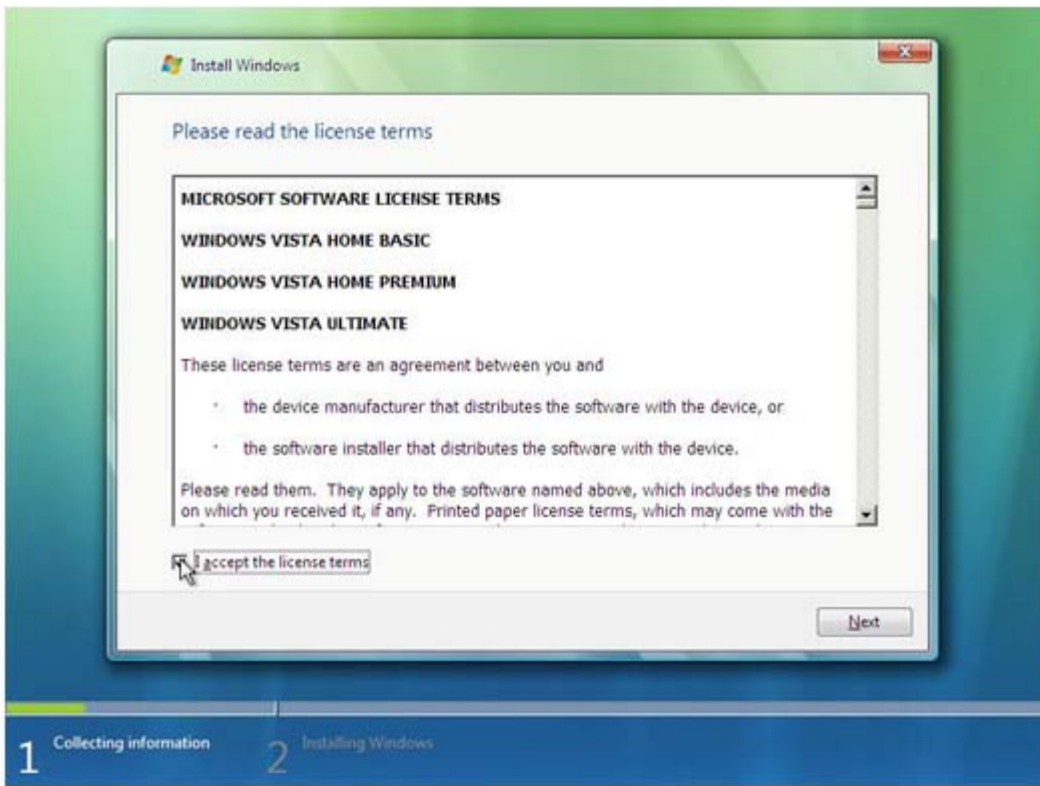
In the next dialog, you'll be able to begin the installation process. Click "Install now" to continue.



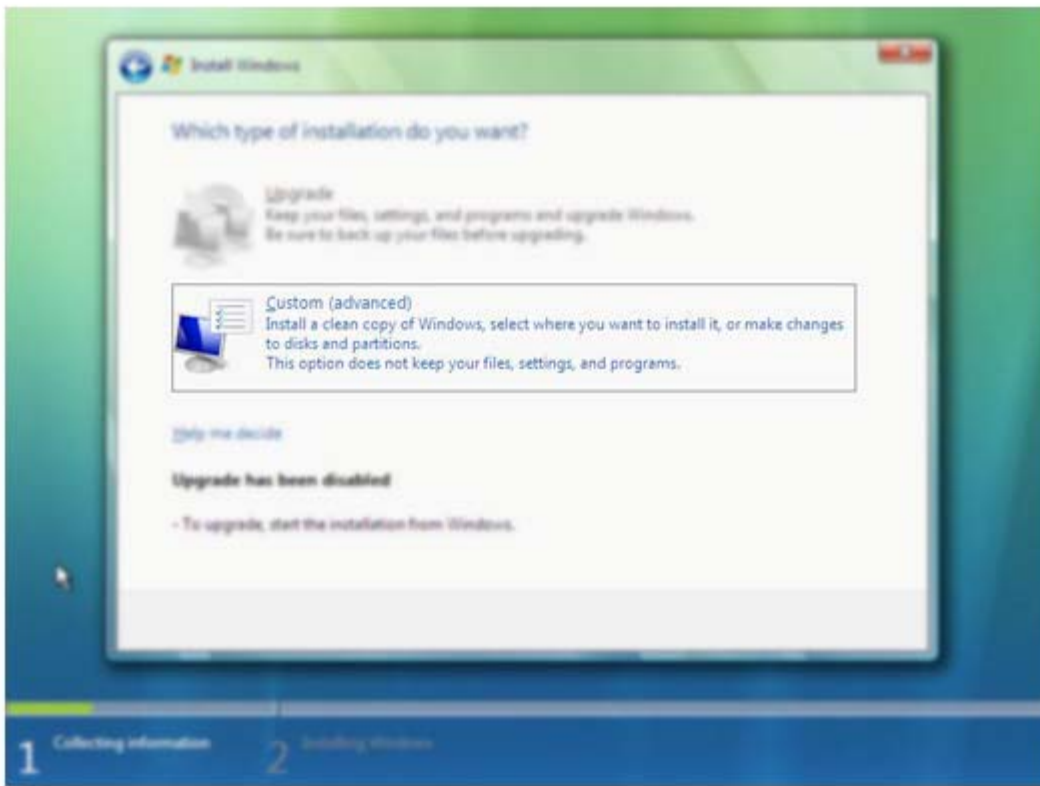
Now you will have to enter your product key in order to continue the installation. The product key printed on a yellow sticker, located on the back of the sleeve that the DVD came in. When you've finished, click the "Next" button.



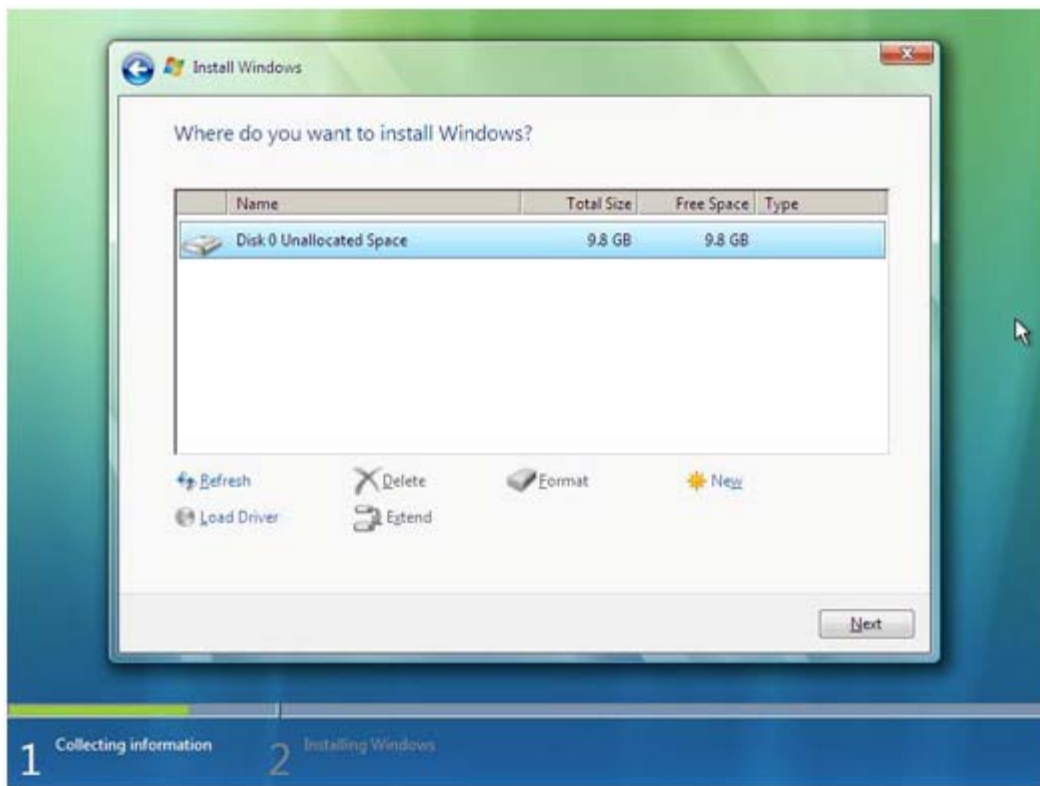
You will now be presented with the *Microsoft Software License Terms*. Please take a moment to scroll through and review this **End User License Agreement (EULA)**. After you are finished reviewing the EULA and if you agree to the terms, click on the “I accept the license terms” checkbox and then click the “Next” button to continue.



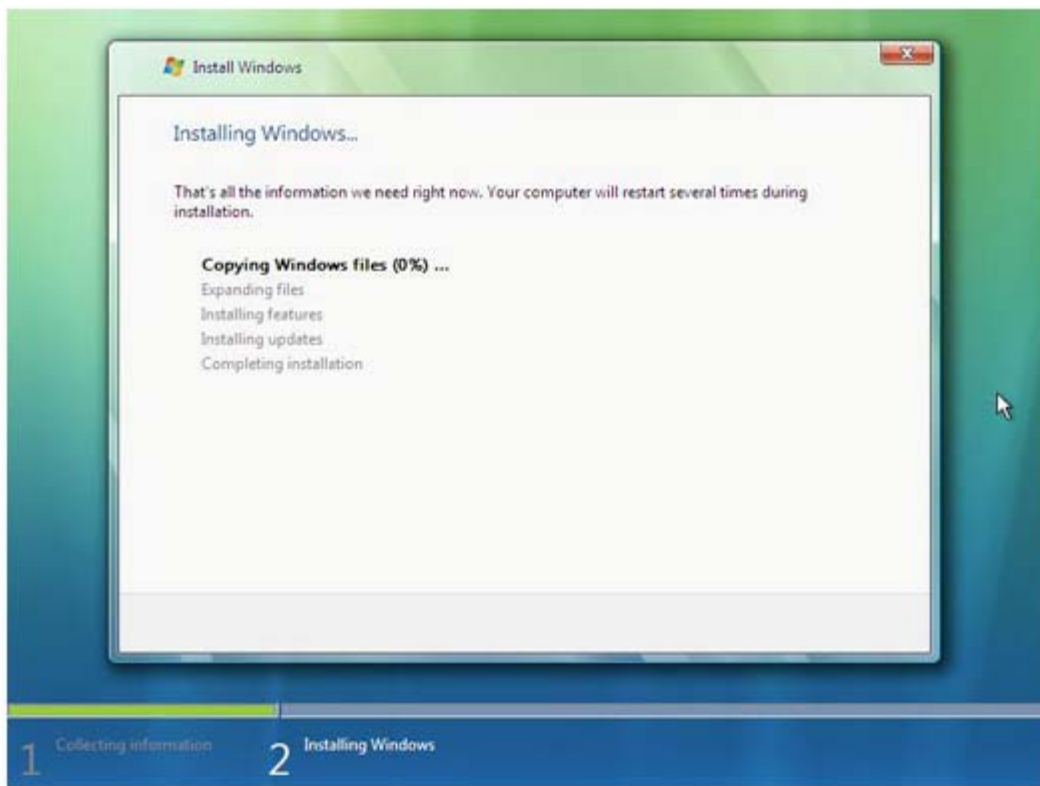
You now have to choose the installation type (Upgrade or Custom) to perform on your computer. The custom option is the only option available to you during the installation. Click on “Custom (Advanced)” to continue.



In this next dialog, you will tell the installation program where to install Windows Vista. The installation program will list all disks and partitions where Windows Vista can be installed. You will need to select a partition with enough free space to perform the installation. The setup program will warn you if the partition you select does not have enough free space to perform the installation. After you have selected the appropriate partition to install Windows Vista into, click the "Next" button.



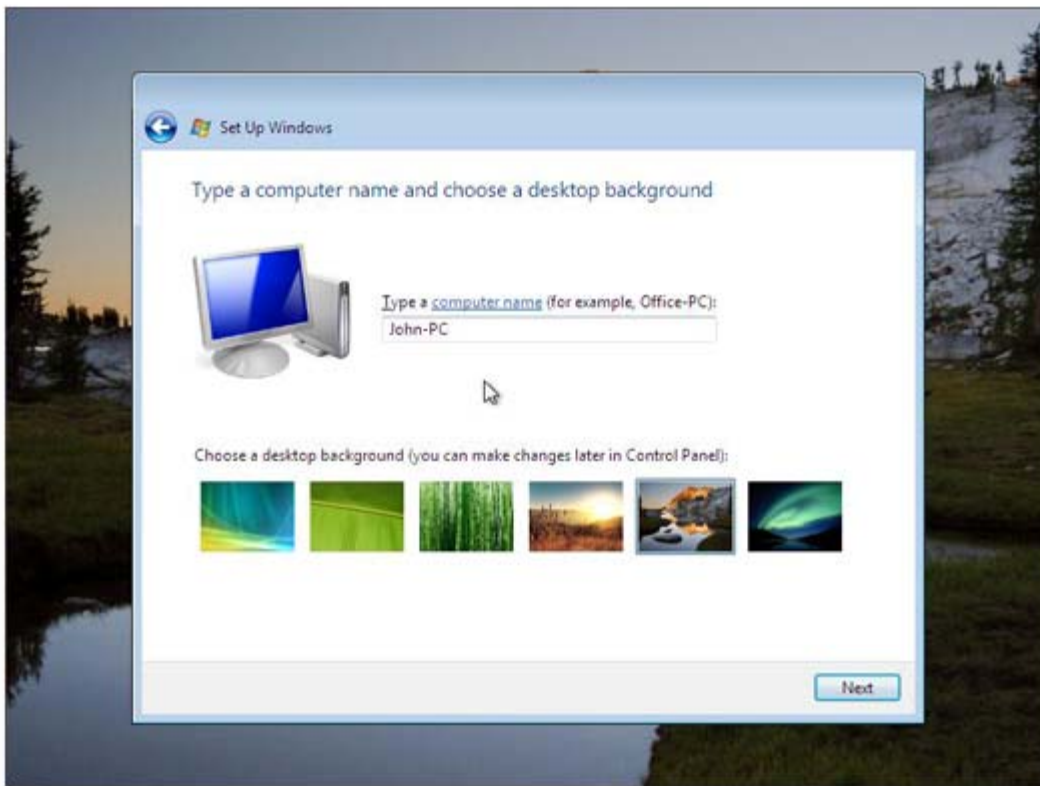
The setup program will now begin the installation. This phase of the installation will take a while depending on how fast your computer's hardware is. You do not need to do anything during this phase, as your computer will restart one or more times during this phase. It is very important to not interrupt the installation process during this phase.



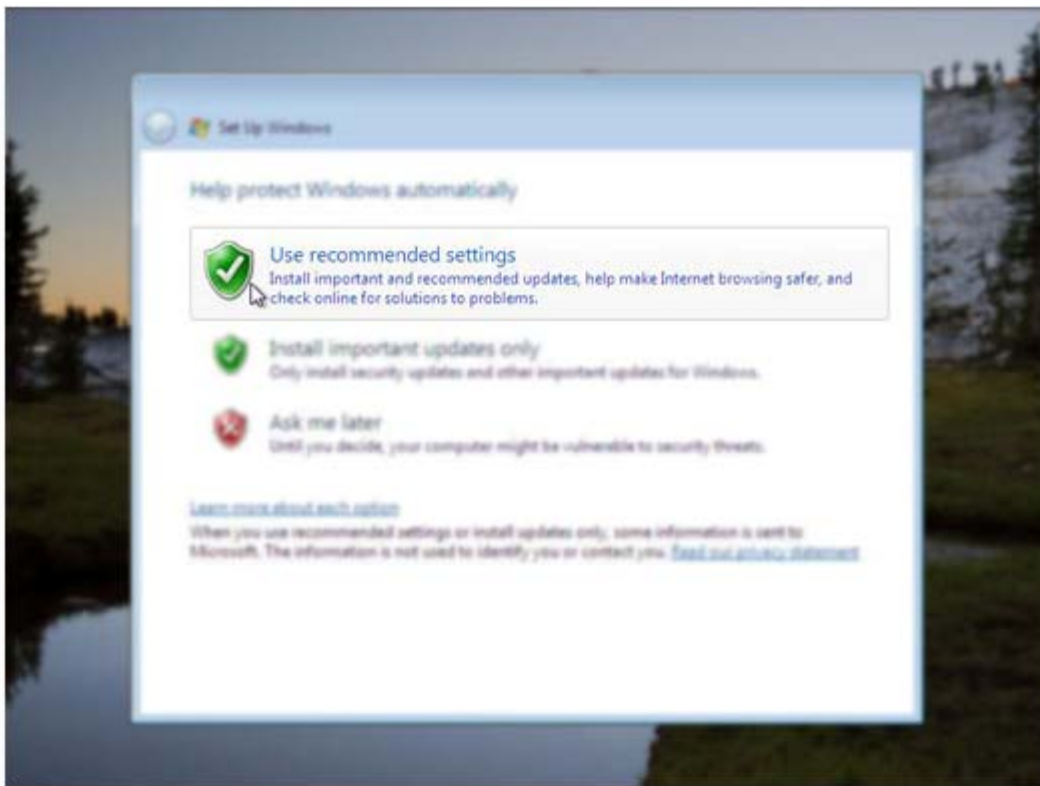
After your computer has rebooted a few times, the setup program will present you with a dialog to choose your username and picture for your account. Your picture is displayed at the login screen and also on the start menu to help identify accounts. You'll also be asked to set a password for that account. To help protect your computer from unauthorized access, it is best to set a password and a hint to help you remember that password. When you've finished, click the "Next" button.



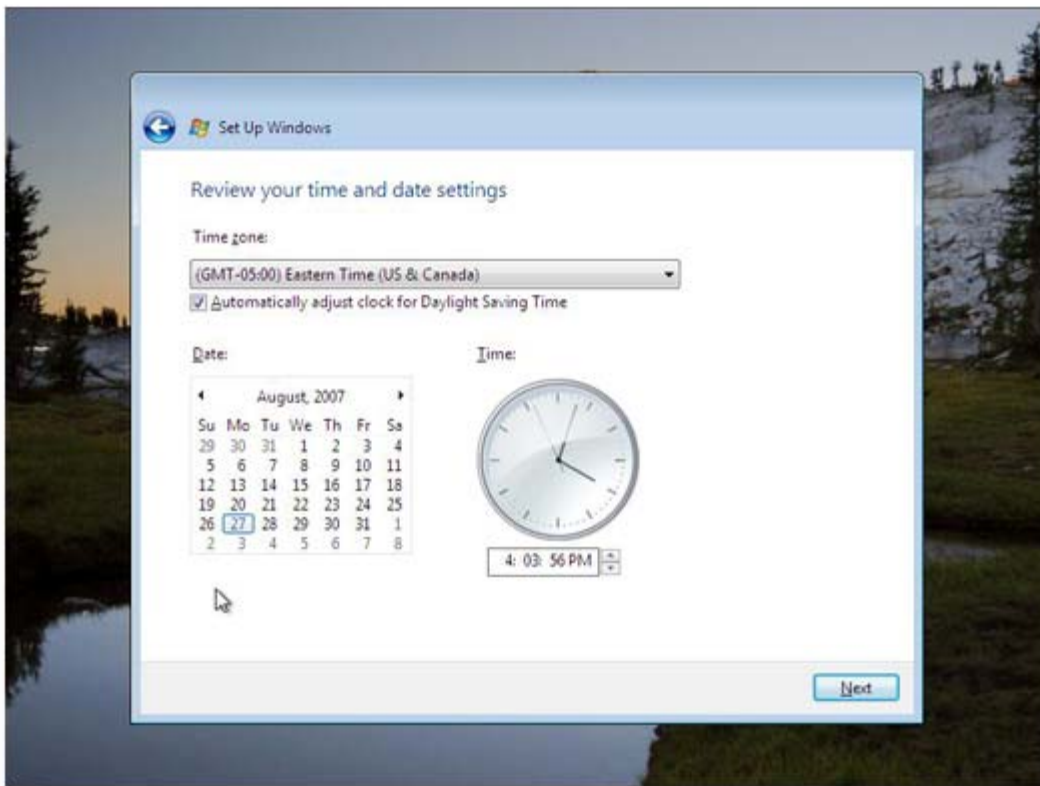
If your computer has network adapters and the Windows installation program detected them, you will then be prompted to set the name of your computer (also referred to as the Hostname). This name identifies your computer among other Windows and Mac based computers on networks. There are guidelines for setting a computer name that you can review by clicking the computer-name hyperlink within the setup dialog. You can also choose a desktop background picture for your account, which you can change later on. When you've finished, click the "Next" button.



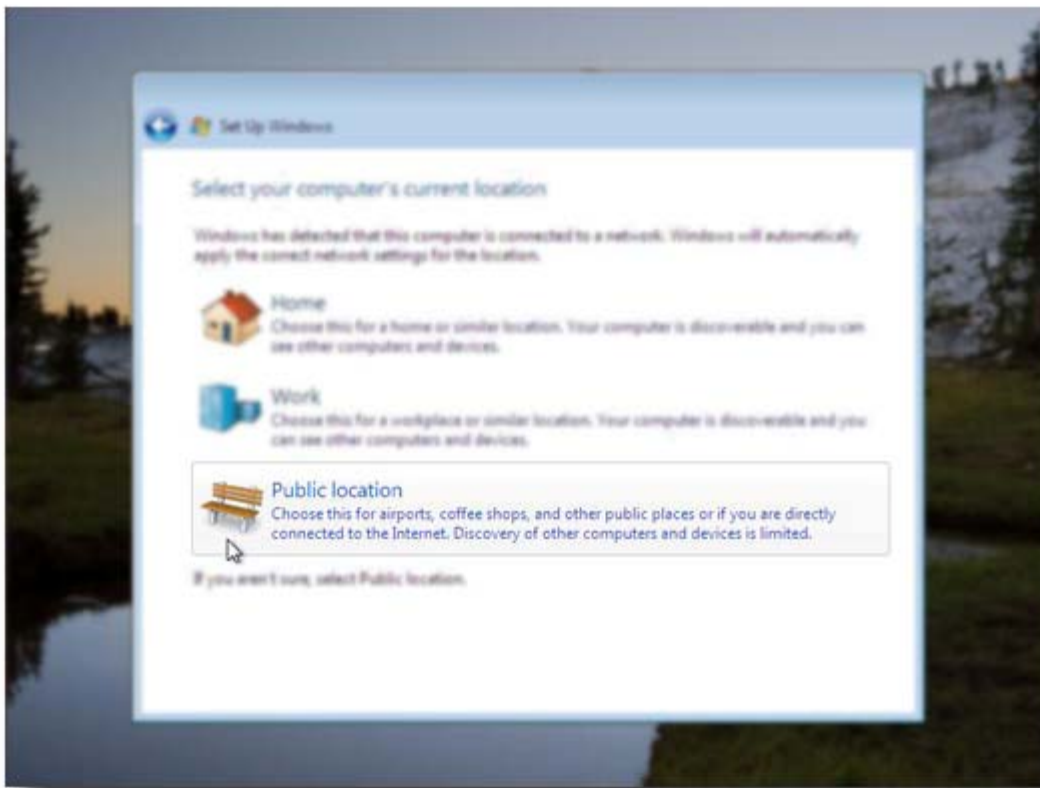
Here, you'll be asked to set some security options for your computer. The most important item here is to have updates installed automatically. For now, it's best to choose the first option, "Use recommended settings."



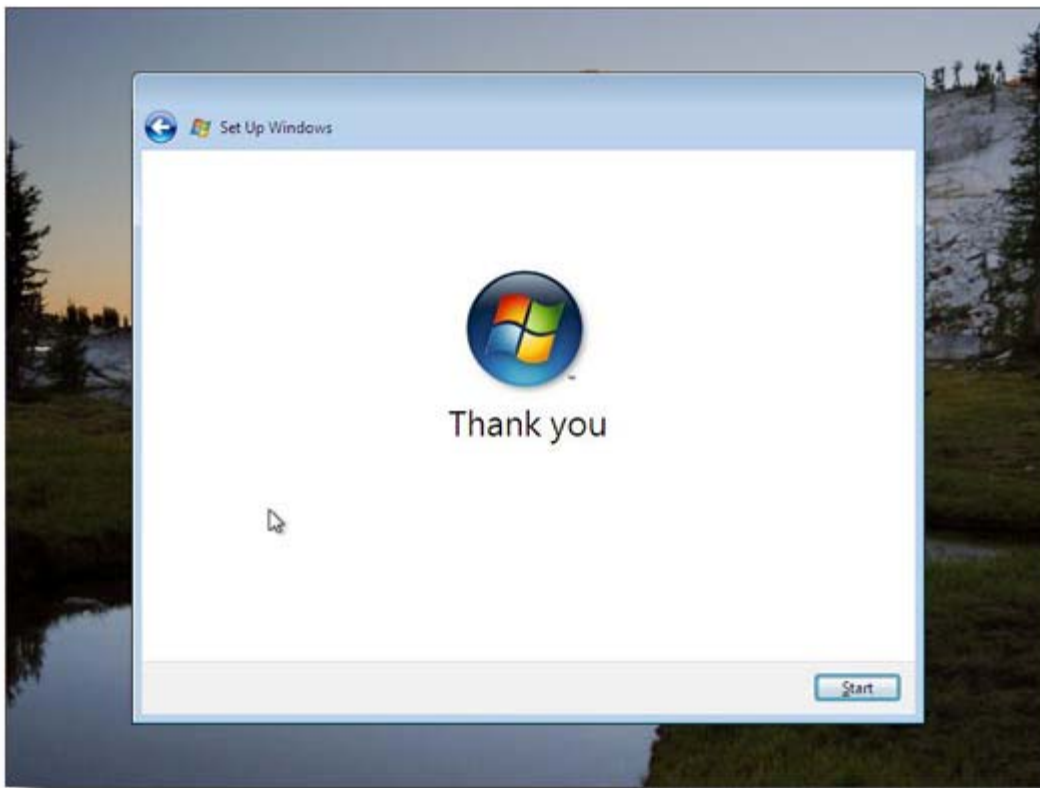
You'll then be prompted to set the correct date, time and time zone for your computer. Here in New York, the appropriate setting is "GMT -05:00 Eastern Time (US & Canada)". When you've finished, click the "Next" button.



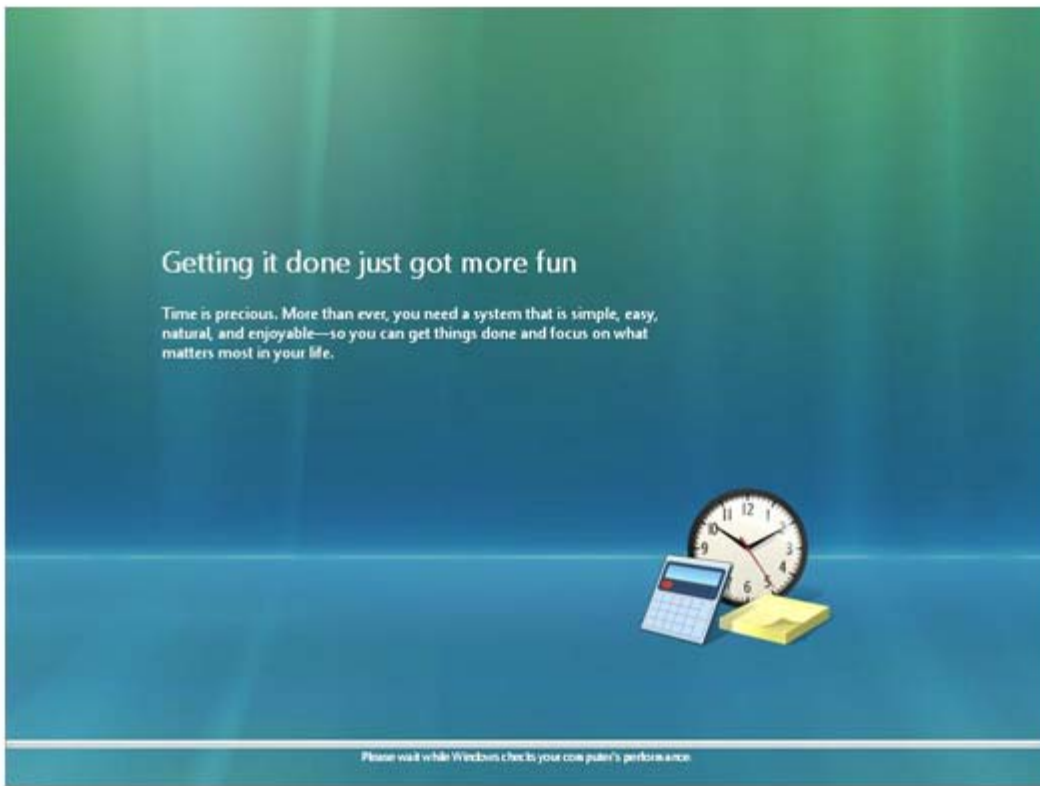
If your computer has network adapters and the Windows installation program detected them, you will now be prompted to set the location of your network. Windows Vista uses the concept of Locations to help determine the appropriate security to apply to your network adapters. Network security is a cornerstone to safe computing, as it helps prevent other users and Internet worms from accessing or infecting your computer. It is best to select the “Public Location” for now, as it is the most secure of the three available options. You will be able to adjust this later.



Congratulations, setup is now complete. Click the “Next” button.



Before you can login, Windows Vista will benchmark (test the performance of) your computer to determine the optimal settings.



When this process finishes, you can begin using your computer. If you set a password for your user account earlier in the process you will be presented with the login screen, where you can select your account and enter your password.

