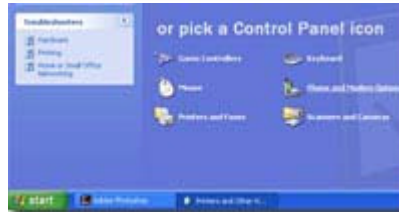


Dial-up for Windows XP

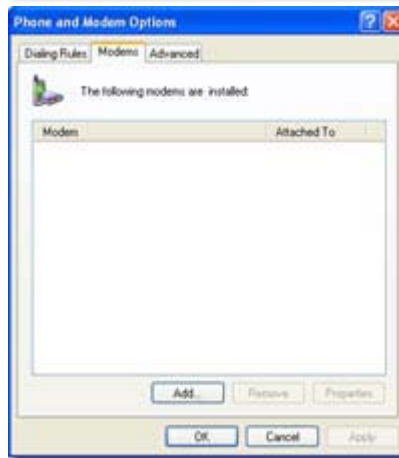
Click the Start menu and open Control Panel.



Choose Phone and Modem Options.



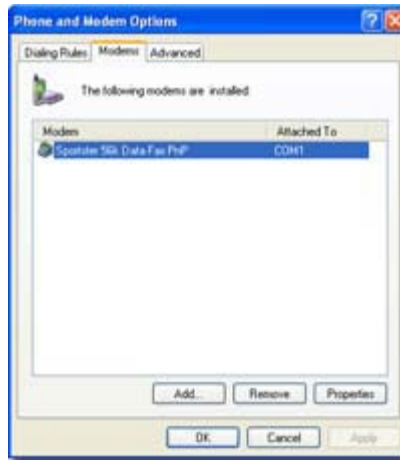
Click the Modems tab. If your modem is installed and properly working, proceed to Dial-Up Connection. Otherwise, click Add.



Click Next to continue with the Add Hardware Wizard.



If Windows XP was successfully able to detect your modem, then you should see something highlighted similar to what is shown to the left. If not, you either do not have a modem or Windows XP does not recognize it. In the latter case, consult your modem manual or manufacturer to troubleshoot. Click OK.



Click the Start Menu and open the Control Panel.



Click Network and Internet Connections.



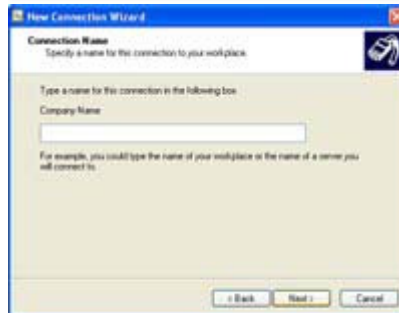
Specify your Location Information as appropriate.



In the New Connection Wizard, select create a Dial-up connection. Click Next



Fill in SUNYSB.EDU for the company name. Click Next.



Add the Appropriate Phone Number to Dial. Click Next.



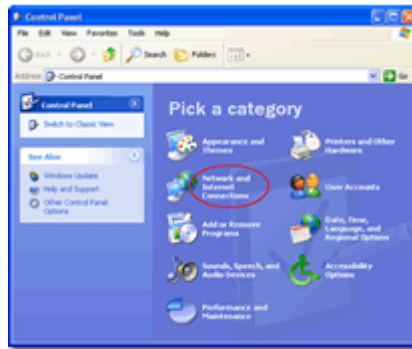
You have successfully created the Dial-up connection for SUNYSB.EDU. Click Finish.



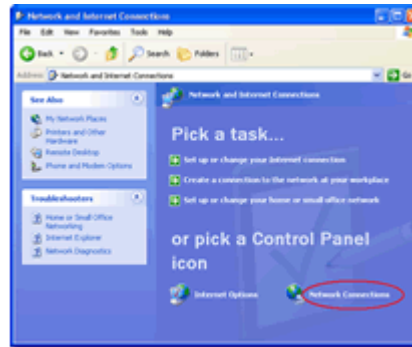
Click the Start menu and open Control Panel



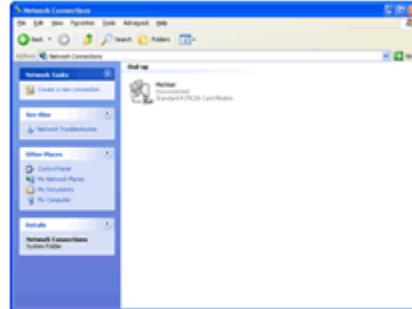
Choose Network Connections



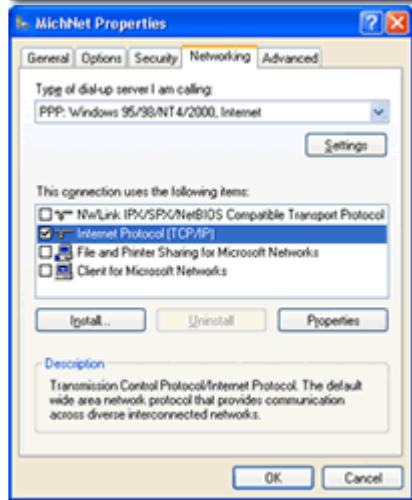
Choose Network Connections again



Right click the Modem Connection and click properties, listed under Dial-Up

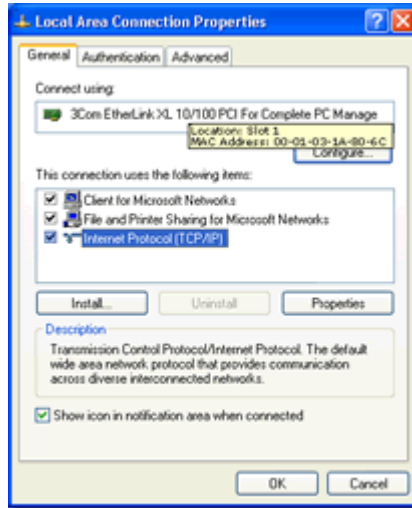


The Connection Properties screen will now appear. Click on the Networking tab. Make sure Internet Protocol (TCP/IP) is checked and highlighted, then click on Properties.

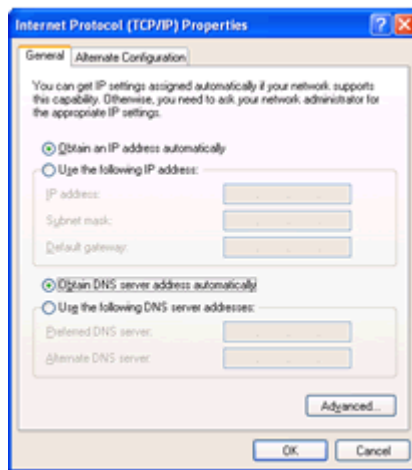


Note: If your Ethernet adapter is not listed in the Connect using box, you need to install your adapter.

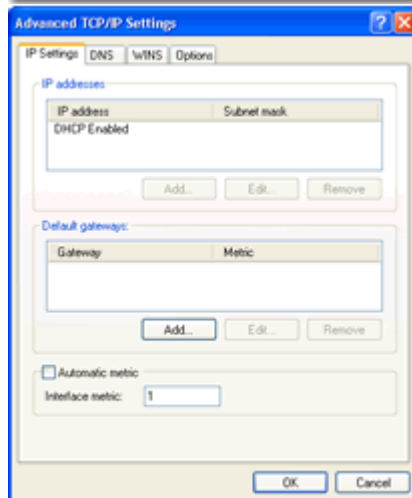
- Verify that the Client for Microsoft Networks box is checked. If missing:
 - Click on Install.
 - Select Client.
 - Click on Add.
 - Under Manufacturers, select Microsoft.
 - Under Network Clients, select Client for Microsoft Networks.
 - Click OK.
- Verify that the Internet Protocol (TCP/IP) box is checked.
If TCP/IP is missing:
 - Click on Install.
 - Select Protocol.
 - Click on Add.
 - Select TCP/IP.
 - Click OK.
- Choose Internet Protocol TCP/IP and click properties.



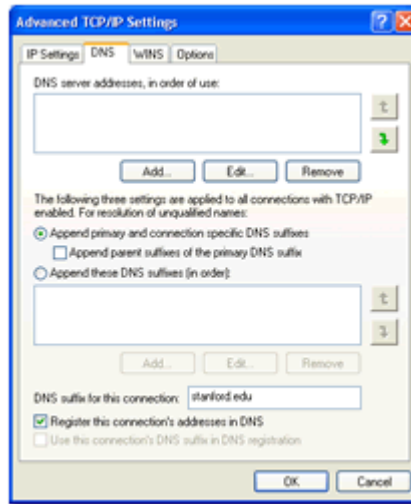
In the Internet Protocol (TCP/IP) Properties dialog box, do the following:
Click Obtain an IP address automatically.
Click Obtain DNS Server automatically.
Click Advanced.



Advanced TCP/IP Settings should display the following.



Advanced DNS TCP/IP Settings should display the following.



Advanced WINS TCP/IP Settings should display the following.

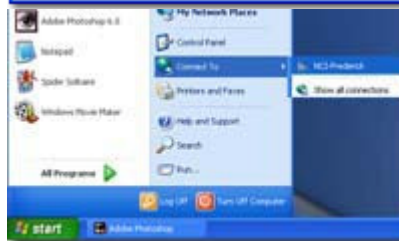


The Options tab can be left at the default settings. Click OK to exit the Advanced TCP/IP Settings dialog box.

Click OK to exit the Internet Protocol (TCP/IP) Properties dialog box.

Click Close to exit the Internet Protocol (TCP/IP) dialog box, and click Close to exit the Local Area Connection Status dialog box.

Click the Start Menu, then go to Connect To, then click SUNYSB.EDU.



Type your User name and password. Be sure you are set to dial the correct number. Click Dial

