

Expand your

# Horizons!

Dial-up for Windows 2000

## Configuring Windows 2000 for Off-Campus PPP

Make sure that your modem is installed properly and configured for Windows 2000 prior to following these instructions. Refer to the instructions provided by your modem manufacturer.

- 1) Click on the **Start** button  
Click on **Settings**  
Click on **Control Panel**  
Double-click on **Network and Dial-up Connections**.
- 2) Double-click on the **Make New Connection** icon to start the **Network Connection Wizard**.
- 2a) Windows 2000 may prompt you for an area code. If so, enter the appropriate area code.



- 3) In the **Network Connection Wizard** click **Next >**



- 4) Select the **Dial-up to the Internet** option.
- 5) Click **Next>**

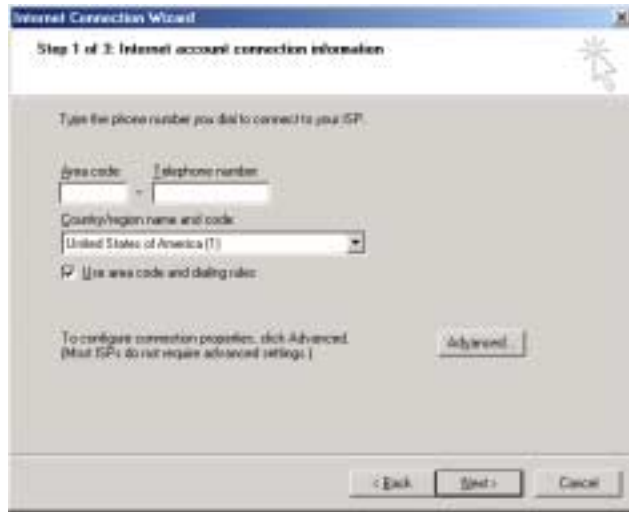
6) Select the **I want to set up my Internet connection manually, or I want to connect through a local area network(LAN) option.**

- 7) Click **Next >**

- 8) Select the **I connect through a phone line and a modem option.**
- 9) Click **Next >**



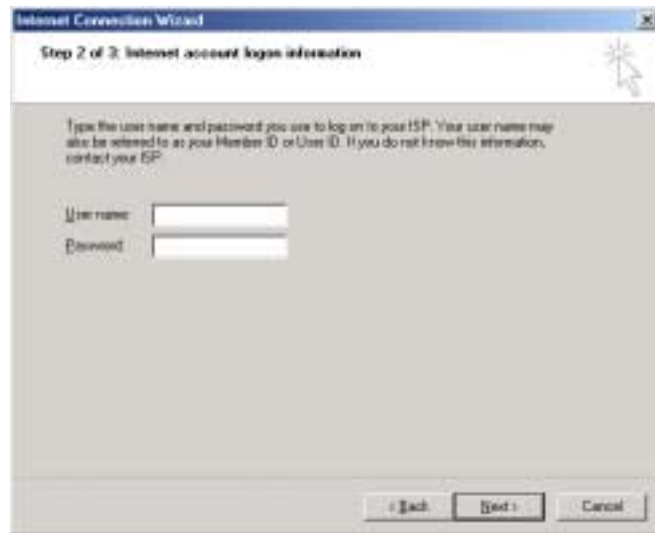
- 10) Enter the phone number which corresponds to your location from the table below.
- 11) Click **Next>**



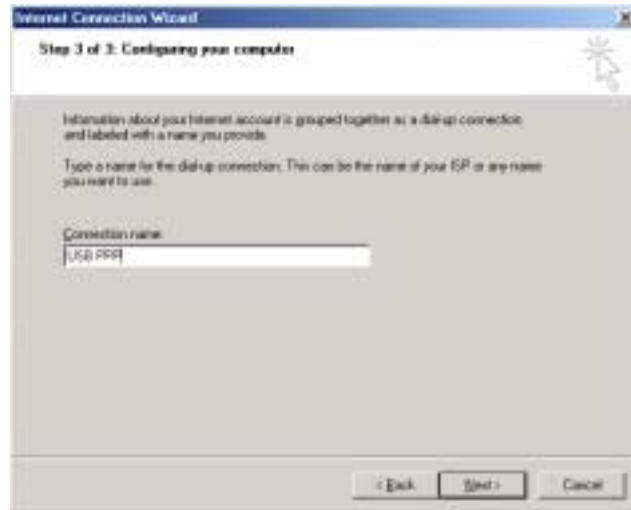
**IMPORTANT: You should confirm your local dial-up number with your telephone service provider. The University at Stony Brook is not responsible for any long distance or regional dialing charges if you use an incorrect number.**

Area	E. Suffolk	W. Suffolk	Nassau	New York City
Students	603-1000	762-1000	417-1000	718-807-1000
Faculty/Staff	603-2000	762-2000	417-1000	718-807-2000

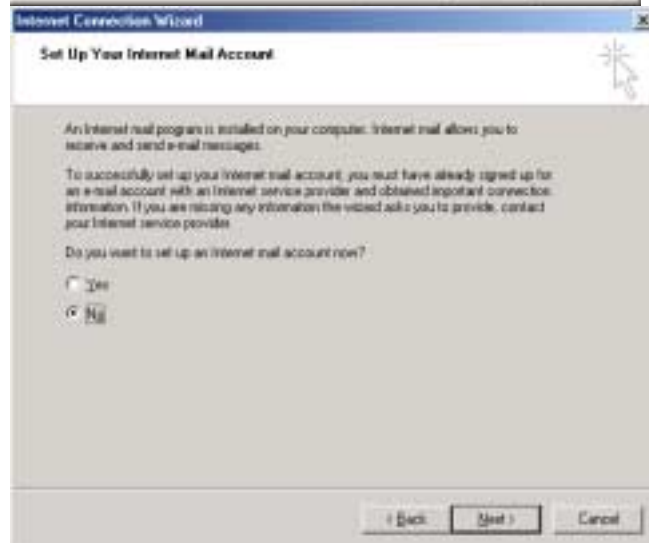
- 12) Enter your **USB Username**.
- 13) Enter your **USB password**.
- 14) Click **Next>**



- 15) Enter a name for the connection  
(ie: USB PPP)
- 16) Click **Next>**



- 17) When prompted if you would like to setup an email account, select the **No** option.
- 18) Click **Next>**



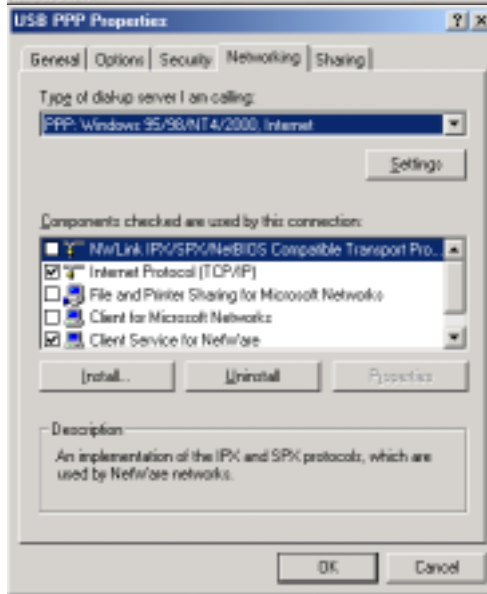
- 19) Make sure the **To connect to Internet immediately**, select this box and then click **Finish** box is unchecked. Click **Finish**



- 20) Using your mouse, right-click on the newly created icon (ie, **USB PPP**) located in the **Network and Dial-up Connection** window.
- 21) Select Properties from the drop-down menu.



- 22) Click the **Networking** tab located in the new window that appears.
- 23) Select **Internet Protocol (TCP/IP)**
- 24) Click **Properties**



- 25) Make sure that the **Obtain an IP address automatically** box is checked.
- 26) Make sure **Obtain DNS server address automatically** box is checked.
- 27) Click **OK**
- 28) Click **OK**



Your computer is now properly configured for off-campus access. To connect to the Internet, proceed to **Starting PPP**.

## Starting PPP

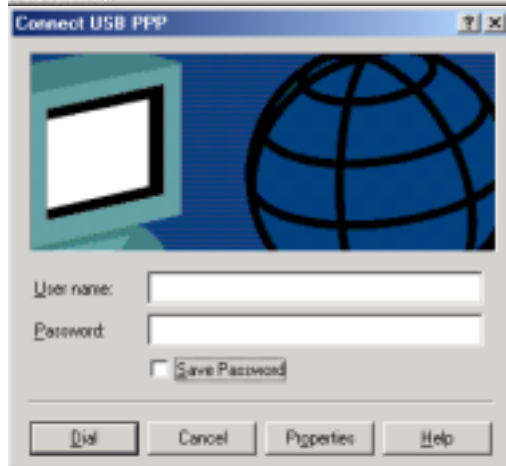
You need to follow these steps each time you wish to connect to the Internet.

1) From the **Network and Dial-up Connections** window, double-click on the connection icon (ie. USB PPP)



2) Enter your USB username  
Enter your USB password

3) Click **Dial**



- 6) You should see a dialog box displaying the status of your connection.
- 7) Then a dialog complete box will appear.
- 8) Click **OK**

**You will be connected automatically, and can now start any applications through PPP.**