

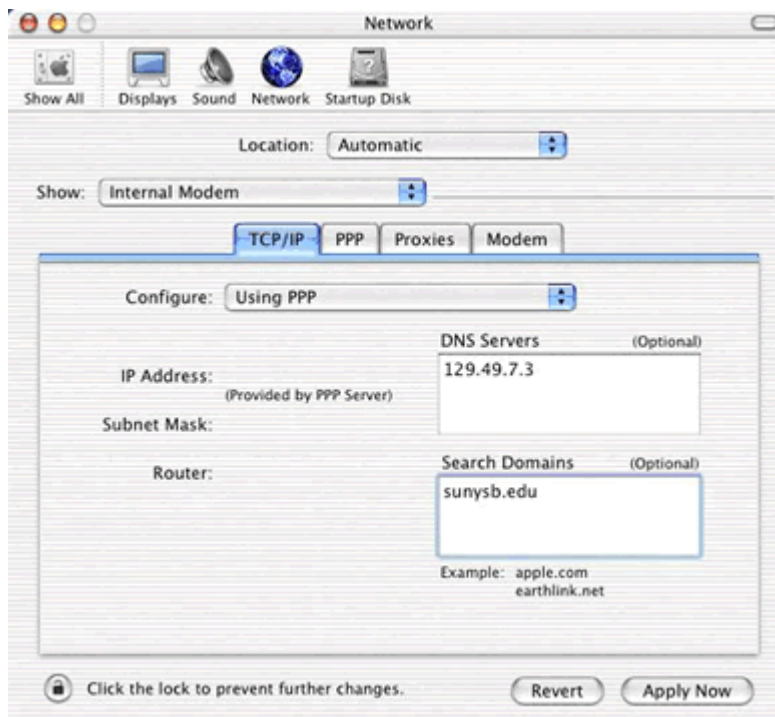
Mac 10.2 Setup



Click the **System Preferences** icon in the **Dock**

Double click the **Network** **Icon**

TCP/IP Setup



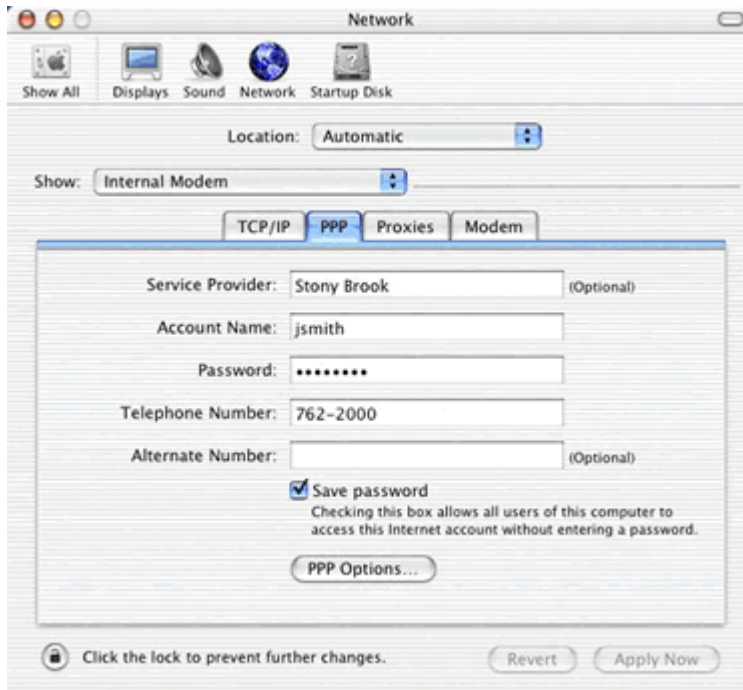
From the popup menu next to **Show**, select **Internal Modem**

Click the **TCP/IP** tab to select it if it is not selected

From the popup menu next to **Configure**, select **Using PPP**

In the box labeled **DNS Servers**, enter **129.49.7.3**

In the box labeled **Search Domains**, enter **sunysb.edu**



Click the **PPP** tab to select it

Enter your email username (sparky, MS or Lotus Notes) in the **Account Name** field

Enter your password in the **Password** field

Enter the dialup number that is local to your area, depending on your location and status, in the **Telephone Number** field

Click the **Save password** check box

When all entries have been completed, click the **Apply Now** button